



**PAC-CLAD®**

P E T E R S E N

A **CARLISLE** COMPANY



FOREST GREEN



HARTFORD GREEN



MILITARY BLUE



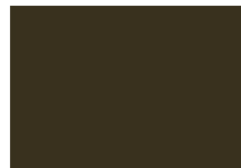
BERKSHIRE BLUE



PACIFIC BLUE  
(FKA Slate Blue)



AWARD BLUE



AGED BRONZE



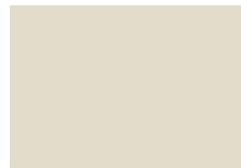
MEDIUM BRONZE



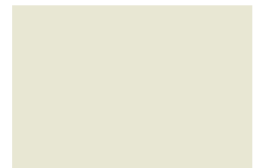
CARDINAL RED



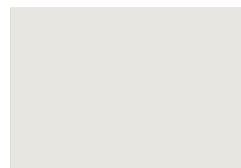
COLONIAL RED



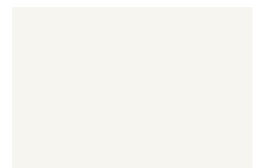
SANDSTONE



ALMOND



STONE WHITE

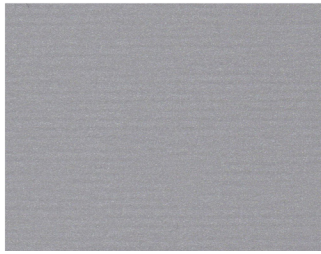


BONE WHITE

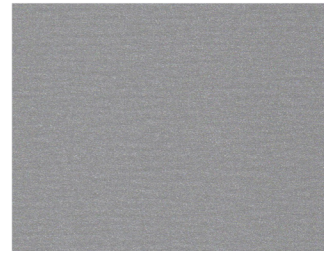
# Color Guide

[PAC-CLAD.COM](http://PAC-CLAD.COM)

# Premium Colors



●▲👑\$\$ ANODIC CLEAR



●▲👑\$\$\$ SILVERSMITH



●▲👑\$ SILVER



●▲👑\$ CHAMPAGNE



●▲👑\$ ZINC



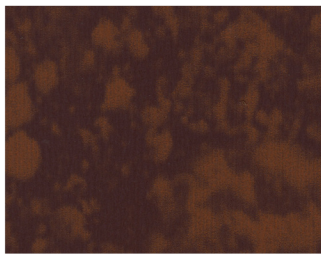
●▲👑\$ WEATHERED ZINC



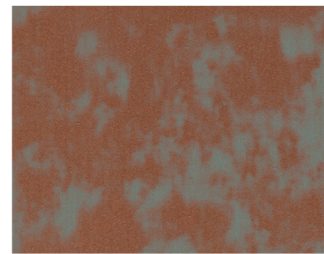
●▲👑\$ COPPER PENNY



●▲👑\$ AGED COPPER



👑\$\$ WEATHERED STEEL



👑\$\$ WEATHERED COPPER

Kynar 500® or Hylar 5000® pre-finished steel and aluminum for roofing, curtainwall and storefront applications.

● Metallic Colors    \$ Pricing    ▲ Cool Colors    👑 Premium Colors

See back for color availability chart.

# Standard Colors



▲ PATINA GREEN



▲ TEAL



▲ HEMLOCK GREEN



▲ FOREST GREEN



▲ HARTFORD GREEN



▲ EVERGREEN



▲ HUNTER GREEN



▲ ARCADIA GREEN



▲ MILITARY BLUE



▲ BERKSHIRE BLUE



▲ GRAPHITE



▲ CHARCOAL



▲ INTERSTATE BLUE



▲ PACIFIC BLUE  
(fka Slate Blue)



▲ AWARD BLUE



▲ MATTE BLACK STEEL    ▲ BLACK ALUMINUM



▲ DARK BRONZE



▲ BURNISHED SLATE



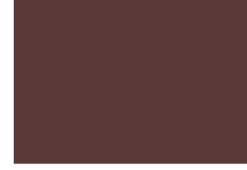
▲ AGED BRONZE



▲ MEDIUM BRONZE



▲ MANSARD BROWN



▲ BURGUNDY



▲ TERRA COTTA



▲ CARDINAL RED



▲ COLONIAL RED



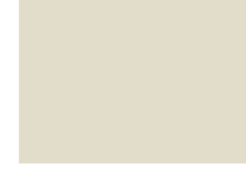
▲ MIDNIGHT BRONZE



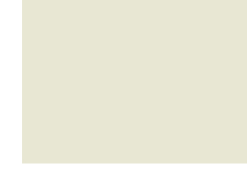
▲ MUSKET GRAY



▲ SIERRA TAN



▲ SANDSTONE



▲ ALMOND



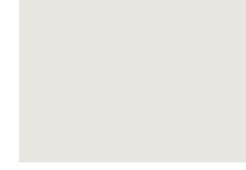
▲ SLATE GRAY



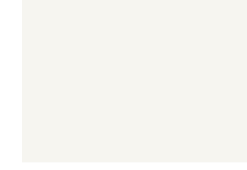
▲ CITYSCAPE



▲ GRANITE



▲ STONE WHITE



▲ BONE WHITE



**PAC-CLAD**

P E T E R S E N

A CARLISLE COMPANY

[PAC-CLAD.COM](http://PAC-CLAD.COM)

# PAC-CLAD® Color Availability

PAC-CLAD STANDARD COLORS	REFLECTIVITY	EMISSIVITY	3 YEAR EXPOSURE	SRI	STEEL		ALUMINUM				20-IN. COIL	
					24 GA.	22 GA.	.032	.040	.050	.063	24 GA.	.032
AGED BRONZE	0.29	0.87	0.27	29	✓							
ALMOND	0.56	0.86	0.55	65	✓	✓	✓	✓	✓		✓	
ARCADIA GREEN	0.29	0.87	0.29	29	✓		✓					
AWARD BLUE***	0.24	0.86	0.23	22	✓		✓		✓			
BERKSHIRE BLUE*	0.30	0.87	0.27	31	✓							
BLACK ALUMINUM**	0.04	0.89	0.04	-2			✓	✓	✓	✓		
BONE WHITE	0.70	0.86	0.69	85	✓	✓	✓	✓	✓	✓	✓	✓
BURGUNDY	0.14	0.85	0.13	9	✓		✓		✓			
BURNISHED SLATE	0.32	0.87	0.31	33	✓							
CARDINAL RED***	0.44	0.86	0.44	49	✓		✓		✓			
CHARCOAL	0.30	0.86	0.30	30	✓		✓	✓	✓		✓	✓
CITYSCAPE	0.49	0.86	0.50	56	✓	✓	✓	✓	✓		✓	✓
COLONIAL RED	0.31	0.86	0.31	31	✓		✓	✓	✓			
DARK BRONZE	0.29	0.86	0.29	29	✓	✓	✓	✓	✓	✓	✓	✓
EVERGREEN	0.28	0.86	0.26	27	✓		✓					
FOREST GREEN	0.10	0.86	0.10	4	✓	✓	✓	✓	✓			
GRANITE*	0.33	0.87	0.33	34	✓	✓	✓	✓	✓			
GRAPHITE	0.29	0.87	0.28	29	✓							
HARTFORD GREEN	0.08	0.88	0.08	3	✓		✓	✓	✓			
HEMLOCK GREEN	0.31	0.87	0.30	32	✓		✓		✓			
HUNTER GREEN	0.28	0.86	0.27	27	✓		✓					
INTERSTATE BLUE	0.16	0.87	0.15	12	✓		✓		✓			
MANSARD BROWN	0.31	0.86	0.31	31	✓	✓	✓	✓	✓			
MATTE BLACK STEEL**	0.26	0.86	0.25	25	✓	✓					✓	
MEDIUM BRONZE	0.30	0.87	0.29	31	✓	✓	✓	✓	✓	✓	✓	✓
MIDNIGHT BRONZE	0.06	0.87	0.06	0	✓			✓				
MILITARY BLUE	0.31	0.86	0.30	31	✓		✓					
MUSKET GRAY	0.32	0.86	0.31	33	✓	✓	✓		✓			
PACIFIC BLUE	0.28	0.86	0.27	27	✓		✓					
PATINA GREEN	0.33	0.86	0.32	34	✓		✓					
SANDSTONE	0.48	0.86	0.48	54	✓	✓	✓	✓	✓	✓	✓	✓
SIERRA TAN	0.32	0.82	0.31	31	✓	✓	✓	✓	✓		✓	
SLATE GRAY	0.38	0.86	0.37	41	✓	✓	✓	✓	✓		✓	✓
STONE WHITE	0.69	0.86	0.67	84	✓	✓	✓	✓	✓	✓	✓	✓
TEAL	0.32	0.86	0.32	33	✓		✓					
TERRA COTTA	0.34	0.87	0.33	36	✓		✓		✓		✓	✓
<b>PAC-CLAD PREMIUM COLORS</b>												
AGED COPPER	0.55	0.80	0.53	62	✓		✓					
ANODIC CLEAR	0.32	0.83	0.31	31				✓				
CHAMPAGNE	0.50	0.85	0.49	57	✓		✓	✓	✓			
COPPER PENNY	0.52	0.81	0.52	58	✓		✓	✓	✓		✓	
SILVER	0.47	0.87	0.46	53	✓	✓	✓	✓	✓		✓	✓
SILVERSMITH	0.32	0.88	0.32	34				✓				
WEATHERED COPPER	0.45	0.88	N/A	51	✓							
WEATHERED STEEL	0.32	0.89	N/A	34	✓							
WEATHERED ZINC	0.48	0.82	0.46	53	✓	✓	✓		✓			
ZINC	0.42	0.82	0.38	45	✓		✓	✓	✓			
<b>CLEAR-COAT ACRYLIC FINISH (NON-KYNAR)</b>												
GALVALUME PLUS	0.68	0.14	0.55	57	✓	✓					✓	

PAC-CLAD Premium finishes are available from stock at a moderate extra cost. PAC-CLAD Copper Penny is a Non-Weathering finish. Solar Reflectance Index calculated according to ASTM E-1980.

\*Low Gloss/Low Sheen, 70% PVDF finish \*\* Appearance differs for Black Aluminum and Matte Black Steel \*\*\* 10-year finish warranty

#### TECHNICAL DATA FOR KYNAR 500/HYLAR 5000 COATING:

- ▶ South Florida Exposure: Color (ASTM D 2244) - No more than 5ΔE Hunter units at 20 years; Chalk (ASTM D 4214) - Rating no less than 8 at 20 years; Film integrity - 20 years.
- ▶ Accelerated Weathering (ASTM D 4587, ASTM G 154): 5000 Hours; Chalk, per ASTM D 4214, rating of 6 or better; Color, per ASTM D 2244, < 5ΔE (Hunter Units) color change.
- ▶ Humidity Resistance (ASTM D 2247): Galvalume or HDG, 100% RH, 2000 hours - No field blisters; Aluminum, 100% RH,

- 3000 hours - No field blisters
- ▶ Salt Spray Resistance (ASTM B 117): Aluminum: 3000 hours, creep from scribe no more than 1/16" (2mm), no field blisters. Galvalume or HDG: 2000 hours, creep from scribe no more than 1/8" (4mm), no field blisters
- ▶ Chemical/Acid Pollution Resistance (ASTM D 1308): Pass
- ▶ T-Bend (ASTM D 4145): 1T - 3T with no loss of adhesion
- ▶ Pencil hardness (ASTM D 3363): HB - 2H
- ▶ Specular Gloss (ASTM D 523) @ 60 degrees: Typical - 20 - 35
- ▶ Abrasion Resistance (ASTM D 968): 80 Liters/Mil +/- 5 Liters

- ▶ Cross Hatch Adhesion (ASTM D 3359): No loss of adhesion
- ▶ Reverse Impact (ASTM D 2794): Galvalume or HDG, 2x metal thickness inch-pounds, no loss of adhesion; Aluminum, 1.5x metal thickness inch-pounds, no loss of adhesion
- ▶ Flame Test (ASTM E 84): Class A Coating